

MI 1005 E Medical Built In Isolator

Baaske Medical – Your ISO-certified medical partner

MI 1005 E Medical Built In Isolator

- Product No.: 2006633
- MI 1005 E Medical Built In Isolator
- Galvanic isolation
- Tested to UL 60601-1 (E342310)

Product information:

The MI 1005E is based on the established technology of his little brother the MI 1005 Medical Ethernet Isolator, which is currently in use and accepted worldwide. The difference between both devices is, that the new MI 1005E Medical Ethernet isolator can be mounted in any appliance, housing or case using standard components manufactured by „HARTING, Germany“. The push-pull interface is carried out in IP65/67, standardized according to IEC 61076-3-106 (Version 4).

The new MI 1005E Medical Ethernet isolator is used to isolate any Ethernet connection up to 5000V, the shielding as well as the signal line. According to medical standards the MI 1005E allows the electrically safe use of electrical medical devices in medical electrical systems according to IEC 60601-1 3rd Edition, connected by RJ45 Ethernet cables up to 1GB/s.

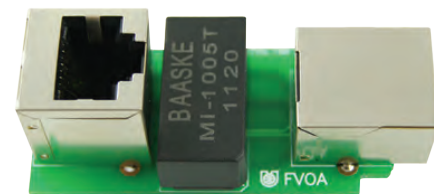
The worldwide use and conformity of the new MI 1005E Medical Ethernet Isolator is investigated by the UL (Underwriters Laboratories) quarterly. The device is approved according to the standard UL 60601-1 (E342310)



mountable with standard HARTING components



Mi 1005E with Assembly Box Compact



Mi 1005E

Technical data:

Isolation Voltage (Signal and Shield)	5000V 50/60 Hz 1 Min.
Ethernet Speed	10/100/1000 MBit/s
Standard	IEEE 802.3
Safety	CE, UL (E342310), RoHS compliant
Dimension (LxWxH)	51 x 23.4 x 18.2 mm
Weight	20g
Connection Sockets	2 x RJ45
Material	UL94V-0 / RoHS compliant
MTBF	0.21 x 10 ⁸ (1 Fault in 21 000 000 hrs)

Installation:

Installation of the MI 1005E via standard Ethernet modules from our partner HARTING Germany GmbH & Co. KG.



MI 1005 E Medical Built In Isolator

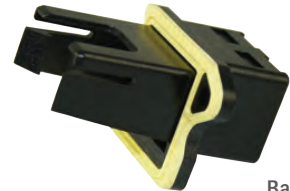
Baaske Medical – Your ISO-certified medical partner

HARTING PushPull Assembly Box Compact

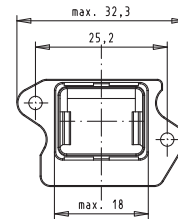
- Product No.: 2006634
- HARTING Assembly Box Compact
- with integrated seal
- Board drillings for M2.5
- with fixing clip
- Plastic, black
- for female insert angled



Assembly in series possible



Back



Dimensions

HARTING PushPull Assembly Box EasyInstall

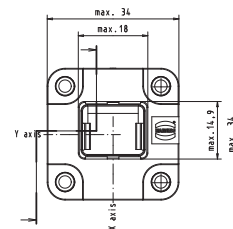
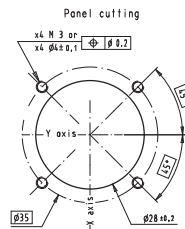
- Product No.: 2006635
- HARTING Assembly Box EasyInstall
- with integrated seal
- Board drillings for M3
- with fixing clip
- Plastic, black
- Degree of protection IP 65 / IP 67



Front



Back



Dimensions



MI 1005 E Medical Built In Isolator

Baaske Medical – Your ISO-certified medical partner

HARTING PushPull Plug IP67 Cat5

- **Product No.: 2006636**
- Housing material Plastic, black
- Mating interface RJ45 (V4) in acc. to IEC 60603-7
- Protection level IP 65 / IP 67
- Temperature range -40 °C ... + 70 °C
- Mating cycles min. 750
- No. of contacts 4-poles, Cat. 5
- Cable diameter 6.5 mm - 8.6 mm
- No special tools required for assembling



HARTING PushPull 8 Plug IP65/67 Cat6

- **Product No.: 2006637**
- Housing material Plastic, black
- Mating interface RJ45 (V4) in acc. to IEC 60603-7
- Protection level IP 65 / IP 67
- Temperature range -40 °C ... + 70 °C
- Mating cycles min. 750
- No. of contacts 8-poles, Cat. 6
- Cable manager blue
- Cable diameter 6.5 mm - 8.6 mm



HARTING PushPull 8 Plug IP67 Cat6

- **Product No.: 2006638**
- Housing material Plastic, black
- Protection level IP 65 / IP 67
- Mating interface RJ 45 in acc. to IEC 60603-7
- Temperature range -40 °C ... + 70 °C
- Wire gauge AWG 27 to AWG 22
- Cable diameter 4.9 ... 8.6 mm
- Mounting without tool

